



BIRD FINDER ADVENTURE KIT Instructions

Have you ever noticed a bird and wished you could see it up close? And how cool would it be to really hear their calls to one another. Even better, what if YOU could call out to THEM! And wouldn't it be awesome if you were able to identify some of the birds you saw? Well, now is your chance to see and hear them up close! Are you ready to explore? GREAT....let's go help Dora find some birds!!

CONTAINS

- 1 Bird Binoculars with break away strap.
- 1 Nature Mic with ear bud.
- 1 Whistle.
- 1 Animals Guide Book.

USING THE BIRD FINDER ADVENTURE KIT:

First, remove your new Bird Finder Adventure Kit from its package and check all the items for damage. Everything okay? Great, Now, let's go over everything one at a time. First....

The Bird Binoculars. So, are you ready to help Dora look for birds? Perfect! Alright then, once you have a bird in sight, bring the Dora Bird Binoculars up and place them comfortably against your eyes. Can you see everything clearly? If not, simply adjust the focus dial located between the eye pieces and turn it until you have a BIRD'S EYE VIEW!! But WAIT! Did you adjust the neck strap? The Dora Bird Binoculars have a special snap apart buckle that you can use to adjust the length of the neck strap.
Next.....

The Nature Mic! After installing the batteries, plug the jack into the proper slot on the body of the Nature Mic and then place the ear bud into your ear. WAIT! Make sure the volume knob, located at the bottom of the hand held portion of your Mic, is turned down first! Once you have spotted some birds and with the ear bud in place, press the ON button, point the Mic towards the birds and SLOWLY, turn the volume knob until you begin to hear something. The microphone is VERY SENSITIVE so, keep the volume at a safe level. That's it, you are now able to hear even the smallest sounds birds make. Let's keep going....

The Whistle. This one's easy, right! Just place the wide end, with the slot, against your lips and blow. Have your Bird Binoculars and Nature Mic handy because once the birds hear you calling, they'll answer back and you want to be ready, right? Remember, don't

ever blow the Whistle directly into the face or ears of anyone. This includes pets who have extra sensitive ears and could be harmed by such things.. Remember, you are an explorer now and the idea is to have lots of fun.....without causing harm to anyone or anything.

The Animal Guide Book. The animal guide book is an awesome group of cards that show you all kinds of different birds. It even has a handy little clip so you can attach it to your belt and take it with you when you explore! Pretty cool, huh? Now, you'll be able to point out all kinds of birds to your family and friends!

CARING FOR THE BIRD FINDER ADVENTURE KIT:

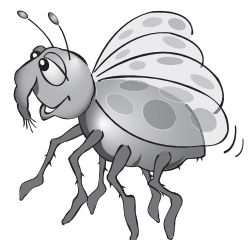
Keep the Bird Finder Adventure Kit, that means ALL OF IT, clean and dry. If any of the items do get wet, wipe them dry immediately.

Use under normal, and safe play conditions only.

When not in use, store the Bird Finder Adventure Kit in a clean, dry area and do not leave any of the items exposed to the elements.

Watch for any cracks or damage to any of the items. Occasionally after use, wipe the items in the Bird Finder Adventure Kit off with a damp cloth before putting them away. Especially the eye area on the Bird Binoculars, the mouth piece of the Whistle and the ear bud.

Remember, if you follow the instructions, keep the Bird Finder Adventure Kit and all its parts clean and remember not to leave any of it outside, it will provide you with tons of fun. And you will be able to help Dora explore for a long time!



CHANGING/INSTALLING THE BATTERIES:

The Bird Finder Adventure Kit comes with a Nature Mic and it requires 2 AAA batteries. Alkaline batteries are recommended. Never use rechargeable batteries. You will need a small screwdriver to remove the cover and access the battery chamber.

- 1.) Using a Phillips screwdriver, loosen the screw on the battery compartment cover located on the underside of the Nature Mic handle. Remove the cover completely.
- 2.) Next, place the new batteries in the compartment as indicated by the Polarity symbols.
- 3.) Replace the cover and hold it in place while you tighten the screw.

CAUTION

Do not leave your Bird Finder Adventure Kit outside or exposed to the elements.

The Whistle that comes with your Kit is intended for calling birds only. Do not blow it directly into the face or ears of another person or pet.

When cleaning the Bird Finder Adventure Kit, USE ONLY WATER AND NEVER HOUSEHOLD PRODUCTS, not even window cleaner.

Always remember to keep the Nature Mic volume at a safe level....not too loud.

If you allow others to use your Bird Finder Explorer Kit, remember to wipe off the mouth piece on the Whistle and the ear bud of the Nature Mic before sharing.

You're an explorer, so be smart and careful in the way you treat all living things in nature. The idea is to learn and explore but, it is your responsibility to use the Bird Finder Adventure Kit properly. A good explorer always respects nature.

BATTERY CAUTION

Only adults should replace batteries. Do not mix old and new batteries or different types of batteries Do not mix alkaline, standard (carbon-zinc) or rechargeable (nickel-cadmium) batteries

Dispose of old batteries promptly and properly. Do not burn or bury them.

Replace the batteries when the Nature Mic stops operating properly.

- Use only fresh batteries of required size and recommended type.
- Never use rechargeable batteries.
- Non-rechargeable batteries are not to be charged.
- Be sure the batteries are inserted with the correct polarity.
- Exhausted batteries are to be removed from the toy.
- The supply terminals are not to be short-circuited.

SUMMITTM
Toys with a twist

© 2008 Summit Products, LLC.
Trussville, AL 35173

PRINTED IN CHINA

©2008 Viacom International Inc. All Rights Reserved.
Nickelodeon, Nick Jr., Dora the Explorer and all related titles, logos and characters are trademarks of Viacom International Inc.