

Night Vision Headlamp Instructions

Have you ever wondered what crawls around in the dark? Well, now is your chance to see what things are wandering around your own backyard when they think no one is watching.

CONTAINS

- 1 Night Vision Headlamp
- 1 Adjustable Head Strap

USING THE NIGHT VISION HEADLAMP

Carefully remove your new Night Vision Headlamp from its package and read all the instructions thoroughly before use.

The name of the toy is Night Vision Headlamp, which means, it works best in dark or near dark conditions. So, you may have to wait until it gets dark outside to really see how awesome your new Night Vision Headlamp is. Once it does get dark, go out into the backyard and put on the Night Vision Headlamp. Remember to adjust the strap so that the lamp fits snugly on your head. Next, slide the button on the top of the headlamp over 2 spaces so that **ONLY** the red lights are on. Certain insects and small animals have highly reflective eyes so, when the red light shines into them, their eyes light up! Okay, so you see all these tiny eyes looking back at you through your red light, now what? Well, get ready and slide the button all the way over until the white light also comes on. Now, with both the red and white lights on, you can really see just what is looking back at you! Don't forget, your Night Vision Headlamp is adjustable so, you can turn and angle it up and down to get the lights right where you want them! Wow, did you ever imagine all those little creatures made your backyard their home? Did you wonder what kind of insects came out after dark, the ones you can hear but can't see? Well, now you can! Remember though, you are now in their home so, be a good guest. One last cool thing about your Night Vision Headlamp, if you slide the button over just once, it can be used as a flashlight!

CARING FOR THE NIGHT VISION HEADLAMP

Keep the Night Vision Headlamp clean and dry. If it does get wet, wipe it dry immediately. Use under normal, and safe play conditions only. When not in use, store the Night Vision Headlamp in a clean, dry area and do not leave it exposed to the

elements.

Occasionally after use, wipe the Night Vision Headlamp off with a damp cloth before putting it away. Remember, if you follow the instructions, keep the Night Vision Headlamp clean and remember not to leave it outside, it will provide you with tons of fun.

CHANGING THE BATTERIES

The Night Vision Headlamp requires 3 AAA batteries. Alkaline batteries are recommended. Never use rechargeable batteries.

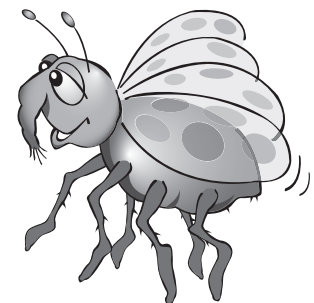
You will need a small screw driver to remove the cover and access the battery chamber.

- 1.) Using a Phillips screwdriver, loosen the screw on the battery compartment cover at the side of the Night Vision Headlamp. Remove the cover.
- 2.) After removing the old batteries, place the new ones in the compartment as indicated by the polarity symbols.
- 3.) Replace the cover and hold it in place while you tighten the screw.

CHANGING THE LIGHT BULB

Only adults should replace the light bulb. However, before doing so, make sure to double check that the try me button or ON switch is working properly and the batteries are new. If the bulb is still not on, then proceed to this next step. Loosen the one bottom screw on the bulb replacement cover, remove the cover of the light bulb. Use your fingers to hold and gently pull out the bulb. Bring it with you to your nearest electronics store and purchase a replacement. Reassemble.

Light bulb rating:
3.6V, 1W



 **CAUTION**

Do not leave your Night Vision Headlamp outside or exposed to the elements.

Do not use or point the Night Vision Headlamp at people or household pets. The Night Vision Headlamp is intended to be used only on bugs, insects and other small critters you may find running around in the field. Lastly, remember you are using the Night Vision Headlamp to explore and learn about living creatures in nature. If you do decide to keep the bugs you find, keep them in a proper, food and air filled area where they can be safe. Otherwise, look, learn and then let them go back where you found them. Remember to always respect nature.

 **BATTERY CAUTION**

Only adults should replace batteries. Do not mix old and new batteries or different types of batteries. Do not mix alkaline, standard (carbon-zinc) or rechargeable (nickel-cadmium) batteries. Dispose of old batteries promptly and properly. Do not burn or bury them.

Any batteries installed in your Night Vision Headlamp are for demonstration purposes only and we make no warranty as to the battery life. Replace the batteries when the Night Vision Headlamp stops operating properly.

Batteries can leak chemicals and harm electronic parts, so remove them if you do not plan to use your Night Vision Headlamp for several weeks.

- Use only fresh batteries of required size and recommended type.
- Never use rechargeable batteries.
- Non-rechargeable batteries are not to be charged.
- Be sure the batteries are inserted with the correct polarity.
- Exhausted batteries are to be removed from the toy.
- The supply terminals are not to be short-circuited.



WARNING:

CHOKING HAZARD - Small parts
Not for children under 3 years

SUMMITTM

Toys with a twist

© 2007 Summit Products, LLC.
Trussville, AL 35173

PRINTED IN CHINA